

# The League of Women Voters

of Appleton, Wisconsin

January 2005

Visit our website at [www.lwvappleton.org](http://www.lwvappleton.org)

## Board of Directors

### President

Karen de Young  
739-3079

[mdeyoung@new.rr.com](mailto:mdeyoung@new.rr.com)

### Vice-President - Action

Jan Quinlan  
734-4808

[quinlanj@lawrence.edu](mailto:quinlanj@lawrence.edu)

### Vice-President - Program

Carolyn Mewhorter  
739-0000

[caroly7027@aol.com](mailto:caroly7027@aol.com)

### Secretary

Gayle Hardt  
731-9547

[gayle.hardt@unitedway.org](mailto:gayle.hardt@unitedway.org)

### Treasurer

Barbara Hoffman  
734-3627

[beamblosm8@aol.com](mailto:beamblosm8@aol.com)

### Membership

Off-Board, Open

### Voter Service

Shirley Adams  
731-2807

[shirladams@netzero.net](mailto:shirladams@netzero.net)

### Observer Corps

Nadine Miller  
733-0012

[nadinemiller@tds.net](mailto:nadinemiller@tds.net)

### PR

Winnie Doxsie  
739-7593

[winnie@mapsolutionswi.com](mailto:winnie@mapsolutionswi.com)

### Local Study

Off-Board, Open

### Bulletin

Miriam Douglass  
757-7776

[mdouglass@new.rr.com](mailto:mdouglass@new.rr.com)

### Website

Carmen Schipper  
954-2088 (h)

[schippers@sbcglobal.net](mailto:schippers@sbcglobal.net)



# From Karen

## The President's Message

I'm a firm believer in taking time for reflection. In this case reflecting and thanking. The League year to date has highlighted the great skills and commitment of our members.

Thanks to Barb Grant, Jan Quinlan, and Carolyn Mewhorter we have updated and organized our local position papers. Thanks to Marcia Hittle, Sue Silton, and Karon Sandberg we were able to review these positions and recommend changes.

Thanks to Connie Kanitz, Winnie Doxsie, and Phyllis Dintenfass we are learning tons about **No Child Left Behind** and charter schools.

Thanks to Nadine Miller we had a very interesting visit to a city council meeting and a lively discussion afterwards courtesy of Helen Nagler.

Thanks to Winnie Doxsie we have a new membership brochure in the making.

## League Calendar

Date	Event	Meeting Place
Thursday, Jan 6 7:00 P.M.-9:00 P.M.	State Education Study Discussion Meeting	Appleton Public Library Lower Level Meeting Room
Tuesday, Jan 11 6:00-7:30 P.M.	Appleton LWV Board Meeting	Appleton Public Library Lower Level Meeting Room
Wednesday, Jan 19 11 A.M.	Tour of Wisconsin Connections Academy	420 E. Harris Street Appleton
Saturday, Jan 22 10 A.M. - noon	Lively Issues	Appleton Public Library Lower Level Meeting Room
Thursday, Feb 3 6 P.M.	State Education Study Consensus	Appleton Public Library Lower Level Meeting Room

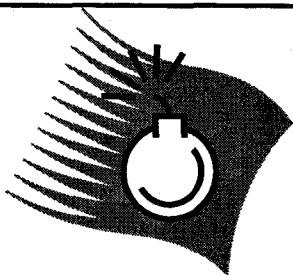
(Karen's message continued)

Thanks to Carolyn Mewhorter we had an informative and enjoyable Holiday Brunch.

Thanks to great Board members Gayle Hardt, Barbara Hoffman, Shirley Adams and Miriam Douglass we have the "behind the scenes" organization that keeps this League going.

And now please take a little time to reflect on all the League accomplishments over the years. We are a vital and important organization in our community and you make that possible. Give yourself a "pat on the back."

Thanks.



*Lively Issues*  
**Saturday, January 22, 10:00 AM - Noon**  
**Appleton Public Library**  
**Lower Level Meeting Room**

**This is an important planning meeting where members decide which issues might be worthy of study next year at the state and local level. It is your opportunity to let League know what is important to you and what issues need to be revised, implemented, researched, or studied. Please plan to attend.**

## **Finance Drive Information**

Does anyone have records from the last finance drive (2 years ago)? We need examples of letters, what corporations and non-League individuals contributed, etc. Please call Karen de Young, 739-3079.

## **State Education Study in full swing**

*The following activities have been scheduled to help prepare our local League for our consensus meeting on February 3, 6 pm at the Appleton public library, lower level meeting room.*

On December 2 about seven Leaguers viewed a video of a panel discussion regarding the No Child Left Behind Act which had been hosted and recorded by the Stevens Point League of Women Voters. Many concerns were expressed following viewing the video about many sanctions that are associated with the bill and faulty assumptions that have been made in the formation of this bill. Contact Connie or Winnie if you are interested in viewing this video at home or with a few other people. Contact numbers are listed below.

About thirty people heard Linda Dawson speak about charter schools at the recent holiday brunch. Leaguers got an overview of charter schools and heard about Appleton's charter schools. Our local study continues with a meeting on **January 6 at 7 pm** at Appleton Public Library, focusing on a continued discussion on open enrollment, Charter Schools and reviewing charter school surveys from 22 local Leagues.

**On Jan. 19<sup>th</sup> at 11 am**, Leaguers will visit **Wisconsin Connections Academy** (Appleton's virtual school), 420 E. Harris Street, Appleton. (North Street runs parallel north of Harris, Franklin parallel South of Harris) Meet in the lobby inside the main entrance. Following the tour (about noon) Leaguers are invited to go to lunch at City Center Grill/Café at 100 E. College Avenue (immediately to the right of the main door into City Center Plaza-- in the building that formerly was Wilbur's Blackened Blues). League members will continue to discuss information regarding virtual schools and home schools over lunch/following lunch. Please RSVP with Connie Kanitz at 722-6438 or Winnie Doxsie at 739-7593 if you plan to come to either the virtual school tour and/or lunch.

[If anyone is interested in reading some materials contact Connie for some hard copies or go online to [www.lwvwi.org](http://www.lwvwi.org) and click on Resources and/or Consensus Questions under the heading of State Education Study

*WISCONSIN CHARTER SCHOOLS ASSOCIATION* accessed from an article online. If you want to read in more detail—[online links] go to [www.wicharterschools.org](http://www.wicharterschools.org)

**35 New Charter Schools In Wisconsin – Grants Awarded for More** *October 26, 2004*  
Thirty-five new charter schools have opened this fall in Wisconsin, increasing the total number of charter schools in the state to 161. In addition, 31 groups have received grants from DPI to support planning of new charter schools that are expected to open next year.

Among the 35 new-start charter schools are many innovative schools serving diverse populations of students in rural and urban areas throughout the state. Following are descriptions of several new charter schools.

**HMONG AMERICAN PEACE ACADEMY's** goal is for students to use their study of the Hmong and other cultures to master academic subjects and fulfill standards for physical, intellectual, civic and moral development. The HAPA has implemented the International Baccalaureate Program to serve its elementary school students. The HAPA charter school is authorized by the Milwaukee Public School District.

**NUESTRO MUNDO COMMUNITY SCHOOL**, authorized by the Madison School District, provides a dual-language (Spanish and English) immersion program for elementary school students. Nuestro Mundo, "Our World" in Spanish, is a charter school that came about after years of planning by parents, teachers and community members. NMCS, which is housed within Allis Elementary School, serves more than 50 kindergartners this year. It plans to add a grade each year through 5th grade.

**ALLIANCE CHARTER ELEMENTARY SCHOOL** is a parent-initiated elementary school, beginning with four, multi-aged, Grade K-1 and 2-3 classrooms, with an enrollment of approximately 80 students. It opened this fall as the first charter school in the Neenah Joint School District. Alliance utilizes a hands-on, individualized, Montessori and project-based learning approach. The school will build excellence in all core academics and also provide early learning opportunities in Spanish and piano keyboarding.

**PREPARATORY SCHOOL FOR GLOBAL LEADERSHIP** is authorized by the Milwaukee School District PSGL's educational program includes: • Small School Environment- The school provides for learning in a small school environment for grades 6-12. Starting with a student cohort of 60 and adding a group of 60 each year, enrollment will max out at 360. • Individual Development- Students are self-directed (thinking, communicating, and acting effectively) • Project Based Learning- Learning is interactive, student-led, and hands on. • Service Learning- The real world becomes a classroom full of learning. • Yearly Themes- Each year, students work to improve a different social institution. • College

Preparation- With a strong academic focus, students are prepared for postsecondary learning. • Multiple Assessment Methods- Social change readiness is developed through authentic assessments, portfolios, and high stakes testing. Students will have the ability to prove that they can think and perform.

EAGLEVILLE ELEMENTARY CHARTER SCHOOL, authorized by the Mukwonago School District, is the first elementary charter school in Waukesha County.

iQ ACADEMIES at WISCONSIN is a new virtual (online) charter high school authorized by the Waukesha School District.

Thirty-one groups in Wisconsin have each been awarded a \$10,000 grant for planning a new charter school. State Superintendent Elizabeth Burmaster announced awards of \$6.8 million in federal charter school grants to support planning for new schools and implementation of charter schools that are in the first two years of operations. The state has 161 charter schools in operation.

"Wisconsin is well known for its educational innovation, and the state's charter schools are no exception," Burmaster said. "By providing more education options for parents and their children, Wisconsin charter schools are part of overall public education efforts to lift achievement for all students and close the gap between economically disadvantaged students, students of color, and their peers."

Wisconsin received \$9.2 million in federal funding allocated for the 2004-05 fiscal year, which started October 1. Over the past three years of the federal charter schools grant, Wisconsin has received \$27.7 million. Additional grants will be awarded later. December 17 is the deadline for dissemination grant applications from charter schools completing at least three years of successful operation. Forty-three currently-operating charter schools received \$150,000 each in implementation grants.

A charter school is a public school that is accountable to the authorizing agency that grants its charter. All school districts are authorizing agencies that may sponsor an unlimited number of charter schools. In addition to the Milwaukee School Board, the City of Milwaukee, UW-Milwaukee and Milwaukee Area Technical College may sponsor charter schools in Milwaukee. UW-Parkside may and has sponsored one charter school in Racine. The charter between the authorizing agency and charter school is a legal contract that typically includes provisions for measurable improvement in student achievement and well as other provisions specified by law. Charter schools must employ DPI licensed teachers, administer statewide tests to students and comply with federal regulations applicable to public schools.

"Charter schools add value to school districts and communities," says Tom Scullen, President of the Wisconsin Charter Schools Association. "In addition to expanding educational options for students, the partnerships between the school district and organizers of charter schools strengthen the positive relationships between the district and community." In addition to serving as WCSA president, Scullen is superintendent of the Appleton Area School District, which is the sponsor of ten charter schools operating currently in Appleton. Three groups in Appleton received grants to support planning of new charter schools -- Active Hands Academy, Appleton Public Montessori and Fox River Academy -- that are expected to open next year.

Educators, parents, school officials and community leaders will have an opportunity to learn more about Wisconsin's quality charter schools at the 2005 Wisconsin Charter Schools Conference in Madison on April 10-12.

**LWV Appleton Membership  
2004-2005**

**A**

**Adams Shirley**

921 W. Ridgeview Dr. Appleton, WI 54914  
731.2807  
shirladams@netzero.net

**Alger Susan and Dan**

71 Brentwood Lane Appleton WI 54914  
(H) 731.5045  
salger@crp.org

**B**

**Balansky Judy**

4212 N. Marshall Heights Appleton, WI 54913  
(H) 739.8377

**Bambrick Gretchen**

600 N.Owaissa Street, Apt. 105, Appleton, WI 54911  
(H) 735.9784  
gbambrick@viika.net

**Barnes Cheryl**

1624 S. Ravina Place Appleton, WI 54915  
(H) 912.7223  
(W) 893.4206  
cheryl@roadamerica.com

**Buchanan Bonnie**

14 Brokaw Place Appleton, WI 54911  
(H) 739.7125  
bgbuchanan@new.rr.com

**Button Alan**

Inverness Circle Appleton, WI 54914  
(H) 739.7125  
abutton@new.rr.com

**C**

**Cronmiller Mary**

3209 White Birch Lane Appleton, WI 54915

**Cronmiller Debra and James**

3209 White Birch Lane Appleton, WI 54915  
(H) 830.2284  
(W) 734.9192  
debracronmiller@new.rr.com

**D**

**De Young Karen**

30 Bellaire Ct. Appleton, WI 54911  
(H) 739.3079  
mdeyoung@new.rr.com

**Dintenfass Phyllis**

19 S. Meadows Dr. Appleton, WI 54915  
(H) 731.0297  
phyllis.dintenfass.com

**Douglass Miriam**

1900 N. McCarthy Rd Appleton, WI 54913  
(H) 757.7776  
mdouglass@new.rr.com

**Doxsie Winifred**

1708 N. Hall Ave. Appleton, WI 54911  
(H) 739.7593  
doxsie@athenet.net

**E**

**Eich Susan**

1233 S. Nicolet Circle Appleton WI 54914  
(H) 731.1855  
Lunkerlou@aol.com

**English Beth**

3650 North Chappell Drive Appleton, WI 54914  
(H) 735.9917  
(W) 735.7610  
mbenglish@juno.com

**F**

**Fenlon Sharon**

207 N. Green Bay Rd. Appleton, WI 54911  
(H) 734.0864  
jsfens@athenet.net

**Fritzell Marlys**

1015 Nawada Ct. Appleton, WI 54911  
(H) 731.0736  
PMFritzell@core.com

**G****Goldgar Corinne**

914 E. Eldorado St. Appleton, WI 54911  
(H) 734.8676  
cgoldgar@execpc.com

**Graham Nancy**

26 South Meadows Appleton, WI 54915  
(H) 738.7794

**Grant Barbara**

832 Cambridge Ct. Appleton, WI 54915  
(H) 735.0336  
bgrant04@net.rr.com

**H****Hardt Gayle**

2171 Sunrise Drive Appleton, WI 54914  
(H) 731.9547  
(W) 954.7211  
gayle.hardt@unitedway.org

**Hemwall Martha**

126 Alton Ct. Appleton, WI 54911  
(H) 738.0809  
(W) 832.6530

**Hittle Marcia**

42 Crestway Ct. Appleton, WI 54913  
(H) 731.8876  
mmhittle@execpc.com

**Hoffman Barbara**

627 E. Brewster St. Appleton, WI 54911  
(H) 734.3627  
(W) 731.9293  
beamblosm8@aol.com

**K****Kamp Katherine**

229 S. Durkee St. Appleton, WI 54911  
(H) 832.0718  
(W) 731.6644  
kathy@housing-partnership.org

**Kanitz Constance**

516 Riverway Menasha, WI 54952  
(H) 722.6438  
rkanitz@milwpc.com

**Kelly Barbara**

2645 Sunny View Road Appleton, WI 54914  
(H) 731.2610  
(W) 832.6168  
bkelly@apl.org

**Kinde Susan**

250 W. River Rd. Appleton, WI 54915  
(H) 734.5759  
sdesk@aol.com

**M****Majid Nasreen**

2425 W. Prospect Ave. Appleton, WI 54914  
(H) 731.0889  
amajid@new.rr.com

**McConnell Patricia**

W2642 Brookhaven Dr. Appleton, WI 54915  
(H) 788.5423  
drpat8@new.rr.com

**Mewhorter Carolyn**

315 N. Drew St., Appleton, WI 54911  
(H) 739.0000  
caroly7027@aol.com

**Miller Nadine**

914 Fox St. Appleton, WI 54911  
(H) 733.0012  
nadinemiller@tds.net

**Ming Marian**

1110 E. North St. Appleton, WI 54911  
(H) 735.9335

**N****Nagler Helen**

932 E. Commercial St. Appleton 54911  
(H) 739.8053

**Needham Ellen**

1940 Palisades Dr. Appleton 54915  
(H) 734.5521  
(W) 733.1992  
needsandec@yahoo.com

**P****Povolny Joy**

31 S. Meadows Dr. Appleton, WI 54915  
(H) 739.3846  
povolny@prodigy.net

**Q****Quinlan Janice**

322 South Court Appleton, WI 54911  
(H) 734.4808  
(W) 832.6519  
quinlanj@lawrence.edu

**S****Sampson Dick**

1013 E. North St., Appleton, WI 54911  
(H) 734.1154  
paulinus7c@yahoo.com

**Sandberg Karon**

821 W. Prospect Ave. Appleton, WI 54914  
(H) 954-1683  
(W) 733.4089  
karonsandberg@earthlink.net

**Schinabeck Patricia**

1212 E. Opechee St. Appleton, WI 54911  
(H) 734.6101 Schinabeck Patricia  
tjschin@athen.net

**Schmidt Stevie**

910 S. Midpark Dr. Appleton, WI 54915  
738.0135

**Silton Susan**

540 River Rd. Appleton, WI 54915  
739-4898  
Siltons@new.rr.com

**Strange Shirley**

W3435 Equestrian Trail Appleton WI 54913-9104  
730.8774  
shirleystrange@yahoo.com

**T****Tesch Jolanda and Lew**

2602 Sunnyview Circle Appleton, WI 54914  
731.6600

**W****Weis Donna**

120 N. Green Bay Rd. Appleton, WI 54911  
(H) 733-4790

**Weis Leonard**

120 N. Green Bay Rd. Appleton, WI 54911  
(H) 733-4790  
lenweis@sbcglobal.com

**Wieckert Bev**

N2720 Evergreen Ln. Appleton, WI 54913  
(H) 739.2773  
bfwiec@yahoo.com

**Z****Zimmerman John**

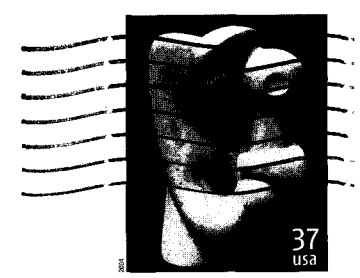
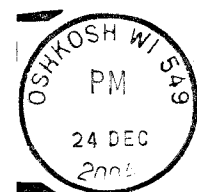
226 E. College Ave. Appleton, WI 54911  
(W) 735.6223

# Happy New Year



The 2004-2005 LWV Appleton Membership list is included in this Bulletin. Board members and contact information are on the first page. For a copy of the "City of Appleton, Wisconsin 2004-2005, Official Directory" contact the City Clerk, Cynthia Hesse at 832-6443.

LWV of Appleton  
P. O. Box 1281  
Appleton, WI 54912-1281



Shirley Strange  
W3435 Equestrian Trail  
Appleton, WI 54913