



# The League of Women Voters

of Appleton, Wisconsin

January 2006

Visit our website at [www.lwvappleton.org](http://www.lwvappleton.org)

## Board of Directors

### President

Beth English  
735-9917

[mb3nglish@yahoo.com](mailto:mb3nglish@yahoo.com)

### Vice-President - Action

Jan Quinlan

734-4808

[quinlanj@lawrence.edu](mailto:quinlanj@lawrence.edu)

### VicePresident - Program

Nadine Miller

733-0012

[nadinemiller@tds.net](mailto:nadinemiller@tds.net)

### Secretary

Shirley Strange

730-8774

[shirleystrange@yahoo.com](mailto:shirleystrange@yahoo.com)

### Treasurer

Barbara Hoffman

734-3627

[beamblosom8@aol.com](mailto:beamblosom8@aol.com)

### Membership

Carolyn Mewhorter

739-0000

[mewhorter@sbcglobal.net](mailto:mewhorter@sbcglobal.net)

### Voter Service

Shirley Adams

731-2807

[shirladams@netzero.net](mailto:shirladams@netzero.net)

### Local Study

Susi Alger

731-5048

[salger@crp.org](mailto:salger@crp.org)

### PR

Winnie Doxsie

739-7593

[winnie@mapsolutionswi.com](mailto:winnie@mapsolutionswi.com)

### Bulletin

Miriam Douglass

757-7776

[mdouglass@new.rr.com](mailto:mdouglass@new.rr.com)

### Website

Carmen Schipper

954-2088 (h)

[schippers@sbcglobal.net](mailto:schippers@sbcglobal.net)



## English Rhetoric

### The President's Message

I hope everyone had a wonderful Christmas with family and friends!

Looking at our calendar in the lower right hand side of this page you will notice Lively Issues on January 21 and the Education Study's general meeting in early February. These two meetings form part of the fundamental League process of study and action. We throw around a lot of terminology in League that some of our newer members may not be familiar with. This may be a good time to explain some of the jargon.

*Lively Issues* can be considered the beginning of the process. Our membership gets together once a year to brainstorm possible topics for study the following year. Study topics are considered based on timeliness, our ability to affect change through government and interest to our members. Top vote getters are brought back to the Board of Directors and then to the full membership at the Annual Meeting in May for a final vote.

The following summer or fall a study committee begins their work. As they learn, they share their knowledge through Bulletin articles, meetings and guest speakers. As their learning progresses, the committee formulates questions to draw out *member agreement* called consensus questions. *Consensus* is the basis for our League positions. Consensus may include

### League Calendar

Date	Event	Meeting Place
Tuesday, January 10 6:00-7:30 PM	Appleton LWV Board Meeting	Appleton Public Library Lower Level Meeting Room
Saturday, January 21 10 AM – 12 Noon	Lively Issues	Multicultural Center 128 N Oneida Street
Thursday, February 2 6:30 PM	Information Meeting on Updating Education Positions	To be announced

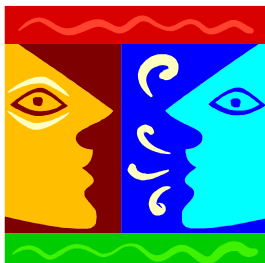
dissenting opinion, but it is the position that the membership agrees to support. Once the entire membership adopts the new *position* it can be acted on by the members.

A similar technique is followed at the National and State LWV in alternating years (voted on at convention). The studies tend to follow the unit of government that affects the issue. This year we will be proposing a local study and a national study. Two state studies are already in process, Voting Rights and Energy.

The process is at the heart of what makes the League of Women Voters so successful. When LWV speaks out on the issues, it is with a reputation for good solid study and grassroots *member agreement*. Positions formed over the years become part of the local, state and national Leagues' *Positions Papers*. League members may only speak on behalf of League based on that body of work. You can review our Positions on line at [www.lwvappleton.org](http://www.lwvappleton.org).

This is where you come in. You and other members will propose a new study topic at Lively Issues. We need your input. Come share the company and intelligent conversation at this important meeting! See you there.

**Beth**



## What's Your 'Lively Issue?'

Lively Issues is the meeting where we brainstorm and prioritize study topics for next year. This year, we'll forward our top picks to the national League as well as our local board for consideration of studies at each level.

If you want to help determine what issues the national and local Leagues study and speak out on, please join us.

Saturday, Jan. 21 10:00 a.m. – noon

Fox Cities Rotary Multicultural Center  
128 N. Oneida Street, Appleton

The Multicultural Center is between the Library and the City Center at the southeast corner of Washington and Oneida streets. You can park in the City Center ramp, Library lot or on the street. It's right next door to Harmony Café, so you can purchase a latte, tea or other treats. Bring your ideas, interests and passions to spark our brainstorming process so next year's study issues can make a difference in our community and our country.



## Local Study Updating Our Education Positions

Our local study this year is aimed at updating all of our Education Positions, most 15 to 20 years old. Committee members Susi Alger, Diane Barkmeier, Linda Bjella, Winnie Doxie, Connie Kanitz, and Shirley Strange have been interviewing Appleton School officials, talking with current and former League members to understand the context of our positions and meeting regularly to discuss their findings. The Committee's goals are to not only update the language, but also to remove esoteric positions that are no longer needed, to add organization to the myriad of positions adopted at various times and to identify issues not addressed by current positions for future studies. The first draft of the revised positions should be available on our League web site soon. The current education positions can be found on the web site, pages 13 and 14: <http://www.lwvappleton.org/LocalPositionPapers2004.pdf>

A meeting to inform all League members on the work of the Committee and provide an opportunity to exchange views on the proposed revisions is tentatively scheduled for February 2 at 6:30 pm. Appleton Public Schools Superintendent Tom Scullen will also address the group and answer questions. The changes being proposed are extensive and comprehensive, so this is an important opportunity to inform yourself – Mark your calendar!



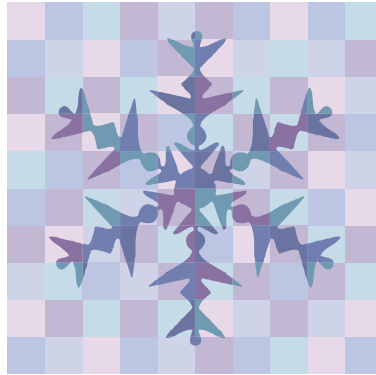
## Meet the Candidates A Neighborhood Focus

In the April 2006 election, voters of the eight, even numbered districts are electing their Appleton City Council alderpersons. Candidates have until January 3<sup>rd</sup> to file with the city clerk. Already it is known there will be contested races in Districts 4, 8 and 10.

See this website for the most current candidate information, <http://www.appleton.org/announcements/>

This year the League wants to assist voters to get acquainted with their district candidates by sponsoring "Meet Your Candidates" gatherings in districts where there is a contested race. League members who live in contested districts are asked to identify an informal gathering site in the district, arrange a time in early to mid March with the candidates, publicize within the district and serve as hostess for the gathering. Guidance and support for these efforts are available from your Board of Directors. If you are able to assist with a "gathering" in your district please contact Shirley Adams after January 29.

# Happy New Year



LWV of Appleton  
P. O. Box 1281  
Appleton, WI 54912-1281